

RNAV (GNSS, VOR/DME) OVERLAY
STANDARD ARRIVAL CHART
INSTRUMENT (STAR) - ICAO

TRANSITION ALT 5000
SPEED RESTRICTION TMA KAUNAS
MAX IAS 250 KT below FL100.

ATIS
TWR
129.055
124.205
118.505

KAUNAS
RWY 08
AKUMA 2A, ELEKA 2A,
KAZLA 2A, PELUT 2A

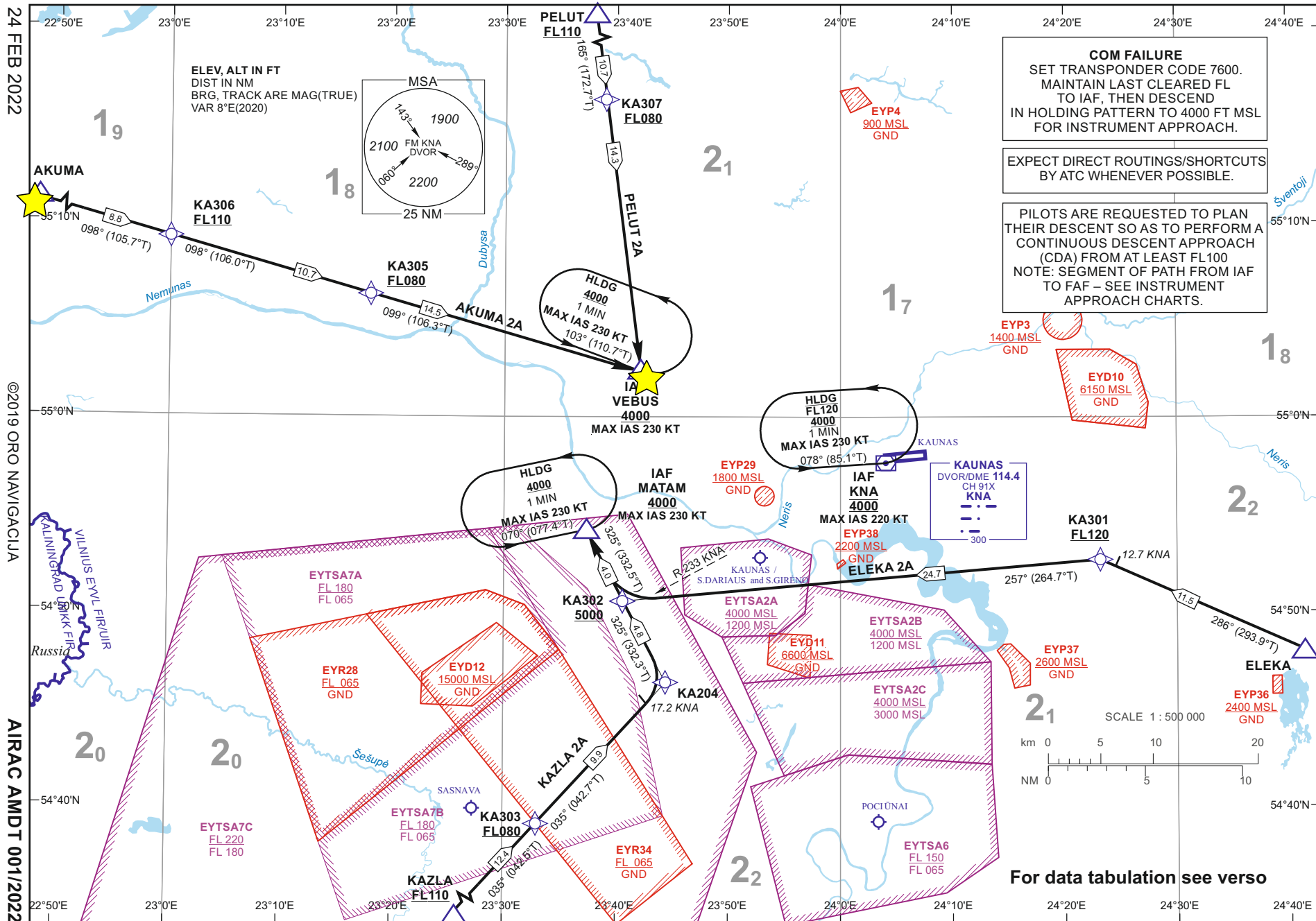
COM FAILURE
 SET TRANSPONDER CODE 7600.
 MAINTAIN LAST CLEARED FL
 TO IAF, THEN DESCEND
 IN HOLDING PATTERN TO 4000 FT MSL
 FOR INSTRUMENT APPROACH.

EXPECT DIRECT ROUTINGS/SHORTCUTS
 BY ATC WHENEVER POSSIBLE.

PILOTS ARE REQUESTED TO PLAN
 THEIR DESCENT SO AS TO PERFORM A
 CONTINUOUS DESCENT APPROACH
 (CDA) FROM AT LEAST FL100
 NOTE: SEGMENT OF PATH FROM IAF
 TO FAF – SEE INSTRUMENT
 APPROACH CHARTS.

For data tabulation see verso

Changes: EYP36, EYP37 and EYP38 added.



24 FEB 2022

©2019 ORO NAVIGACIJA

AIRAC AMDT 001/2022

KAUNAS

RNAV (GNSS, VOR/DME) OVERLAY

STAR RWY 08

TABULAR DESCRIPTION

STANDARD INSTRUMENT ARRIVAL (STAR) ROUTES

STAR NAME	ROUTE	FL/ALTITUDE RESTRICTIONS
AKUMA 2A	From AKUMA proceed on track 098°. At KNA DME 27.9 NM turn right on track 099° and proceed to IAF VEBUS.	Cross KNA DME 38.6 NM at FL110 or above. Cross KNA DME 27.9 NM at FL080 or above. Cross VEBUS at 4000 FT MSL or above.
ELEKA 2A	From ELEKA proceed on track 286°. At KNA DME 12.7 NM turn left on track 257°. Cross R-233 KNA turn right on track 325° and proceed to IAF MATAM.	Cross KNA DME 12.7 NM at FL120 or above. Cross R-233 KNA at 5000 FT MSL or above. Cross MATAM at 4000 FT MSL or above.
KAZLA 2A	From KAZLA proceed on track 035°. At KNA DME 17.2 NM turn left on track 325° and proceed to IAF MATAM.	Cross KAZLA at FL110 or above. Cross KNA DME 25.8 NM at FL080 or above. Cross R-233 KNA at 5000 FT MSL or above. Cross MATAM at 4000 FT MSL or above.
PELUT 2A	From PELUT on track 165° proceed to IAF VEBUS.	Cross PELUT at FL110 or above. Cross KNA DME 23.7 NM at FL080 or above. Cross VEBUS at 4000 FT MSL or above.

RNAV STAR WAY POINT CODING (All segments – TF legs)

STAR NAME	ROUTE
AKUMA 2A	AKUMA - KA306[F110+] - KA305[F080+] - IAF VEBUS[A4000+;K230-]
ELEKA 2A	ELEKA - KA301[F120+] - KA302[5000+] - IAF MATAM[A4000+;K230-]
KAZLA 2A	KAZLA[F110+] - KA303[F080+] - KA204 - KA302[5000+] - IAF MATAM[A4000+;K230-]
PELUT 2A	PELUT[F110+] - KA307[F080+] - IAF VEBUS[A4000+;K230-]

WAYPOINT COORDINATES

FIX/POINTS	COORDINATES	RADIAL/DISTANCE
KA204	54 46 21.6N 023 44 26.5E	KNA R217.6/D16.0
KA301	54 52 41.9N 024 23 10.9E	KNA R106.4/D12.1
KA302	54 50 33.9N 023 40 36.9E	KNA R235.0/D15.3
KA303	54 39 06.3N 023 32 54.8E	KNA R216.8/D25.8
KA305	55 06 20.4N 023 17 57.6E	KNA R281.0/D27.9
KA306	55 09 15.4N 023 00 01.4E	KNA R280.5/D38.6
KA307	55 16 27.3N 023 39 01.5E	KNA R315.4/D23.7
AKUMA	55 11 37.8N 022 45 10.6E	KNA R280.2/D47.4
ELEKA	54 48 01.6N 024 41 20.1E	KNA R106.2/D23.6
KAZLA	54 29 59.3N 023 18 33.8E	KNA R216.3/D38.2
MATAM	54 54 08.9N 023 37 22.7E	KNA R249.9/D15.7
PELUT	55 27 04.4N 023 36 37.1E	KNA R324.7/D33.4
VEBUS	55 02 19.2N 023 42 11.7E	KNA R283.2/D13.4
KNA	54 57 37.4N 024 03 59.1E	

FOR DETAILED FLIGHT PROCEDURES REFER TO AIP EYKA AD 2.22

Changes: description of STAR AKUMA 2A.